



Situation Map Showing Flooded Elegu Town and River Unyama— Northern Uganda

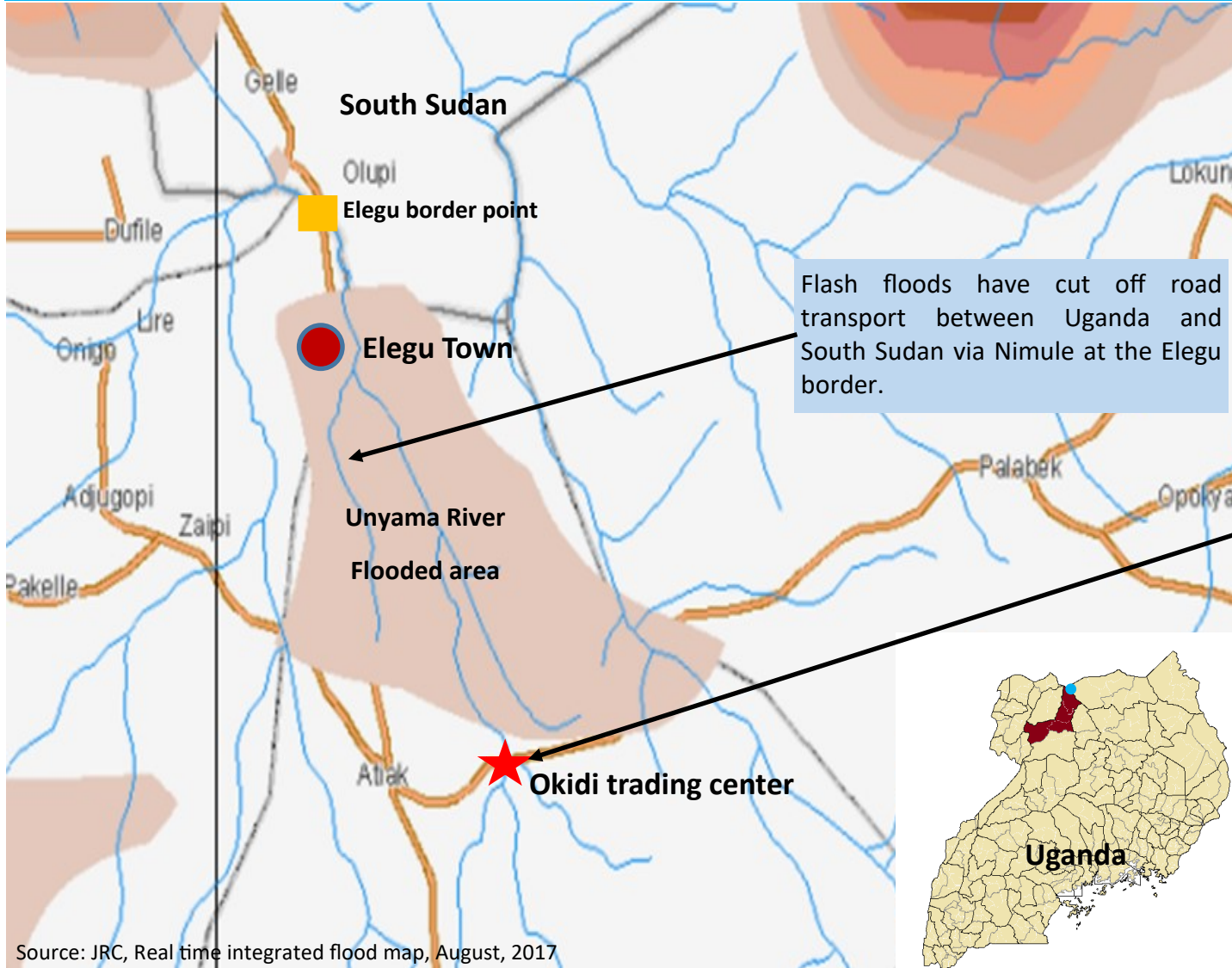
Date: 22 August 2017

Disaster: Flash Flood

Occurred at: 11:00 hours

Affected District: Amuru

Sub County: Atiak



The road linking Adjumani/Amuru to Lamwo district and the refugee settlement in Palabek is also cut off at River Unyama where flash floods swept away the bridge .



Source: JRC, Real time integrated flood map, August, 2017

